



# CONDITIONS OF ENTRY: COUNTRY CHAMPIONSHIPS

---

TO BE READ IN CONJUNCTION WITH THE 2023-24 NSWTA  
GENERAL CONDITIONS OF ENTRY



# Contents

<b><u>SECTION 1- IMPORTANT DATES</u></b> .....	2
<b><u>SECTION 2 – COUNTRY CHAMPS ENTRY INFORMATION</u></b> .....	3
<u>Nomination Closing Date</u> .....	3
<u>Nominations and Entry Fees</u> .....	3
<u>Dates of Competition</u> .....	4
<u>Divisonal Categories</u> .....	4
<u>Venue</u> .....	4
<u>Affiliate Coordinator &amp; Team Management Requirements</u> .....	4
<u>Referee Nomination</u> .....	5
<u>Online Registration and Team Numbers</u> .....	7
<u>Team Numbers</u> .....	7
<u>Communication</u> .....	7
<u>Participant Briefing Video</u> .....	7
<u>Team Registration Form</u> .....	8
<b><u>SECTION 3 - EVENT OPERATIONS</u></b> .....	9
<u>Control of the Event</u> .....	9
<u>Wet Weather</u> .....	9
<u>Match Balls</u> .....	9
<u>Match Results</u> .....	9
<u>Competition Points</u> .....	9
<u>Affiliate Championship Points</u> .....	9
<u>Game Duration</u> .....	10
<u>Trophies</u> .....	10
<u>Presentation</u> .....	10
<u>Draw Format</u> .....	10
<u>Medical</u> .....	10
<u>Tents</u> .....	11
<u>Rules, Variations &amp; Adjustments</u> .....	11
<u>Send Offs and Sin Bins</u> .....	11
<b><u>SUMMARY NOTE</u></b> .....	12

## Section 1- IMPORTANT DATES

1.1

### Thursday 24<sup>th</sup> August, 2023

- Team Management and Referee Nominations emailed to all affiliates.
- Referee Registration Open

### Monday 11<sup>th</sup> September, 2023

- Team Nominations Open
- Referee Nominations Close

### Wednesday 20<sup>th</sup> September, 2023

- Team and Team Management Nominations Close
- New & Imported Players Form Available (Forms available on the Events website)
- Team Uniform Design Due (Design sent in for approval)
- Player Pool Opens

### Monday 25<sup>th</sup> September, 2023

- Individual Online Player/Team Management Registrations Open
- Player Rosters Due

### Friday 29<sup>th</sup> September, 2023

- Player Pool Closes
- Country Championships Draft Draw Released

### Wednesday 4<sup>th</sup> October, 2023

- Individual Online Player/Team Management/Referee Registrations Close
- Working with Children Protection Form Due (Forms available on the Events website)
- Statuary Declaration Due (Forms available on the Events website)
- List of Un-financial & Suspended Players Due (Forms available on the Events website)
- Tent Form

### Friday 6<sup>th</sup> October, 2023

- Late Registration Applications Open

### Wednesday 11<sup>th</sup> October, 2023

- Late Registration Applications Close

### Saturday 14<sup>th</sup> of October, 2023

- Day 1 of Competition

### Sunday 15<sup>th</sup> of October, 2023

- Day 2 of Competition – Final Series.

## SECTION 2 – COUNTRY CHAMPS ENTRY INFORMATION

<b>2.1</b>	<b>Nomination Closing Date</b>
2.1.1	<p>Affiliate Team, and Team Management Nominations will be available via the <a href="#">2023 Country Championships Webpage</a> and are due by <b>Wednesday 20th September, 2023</b>. Late nominations will only be accepted at the convenience of the competition.</p> <p><b>Referee Nominations MUST be completed in FULL by Monday 11<sup>th</sup> September.</b></p> <p>All successfully nominated Affiliates will be required to provide their Team Rosters by <b>Monday 25th September, 2023</b>; Statutory Declaration, List of Un-financial/Suspended Players, and Working with Children Protection Forms by <b>Wednesday 4th October, 2023</b>.</p> <p>Please send by email to: <a href="mailto:nathan.loveday@nswtouch.com.au">nathan.loveday@nswtouch.com.au</a></p> <p>All Team Management and Affiliate Coordinators will need to complete their online registrations via the links that will be provided to Affiliate Coordinators.</p> <p>Incomplete Team, Coach, and Referee Nominations will be advised to Affiliates and only accepted when properly and fully completed.</p>
<b>2.2</b>	<b>Nominations and Entry Fees</b>
2.2.1	<p>There are a number of important details that are necessary for this process to be completed:</p> <ul style="list-style-type: none"> <li>● Teams the Affiliate are entering into the competition</li> <li>● Coaches, Assistant Coach &amp; Managers details (Name, Mobile &amp; Email).</li> <li>● Qualified Referees for each team and details (Name, Mobile &amp; Email), plus an additional one from your Affiliate (For Example: 2 teams = 3 Referees).</li> </ul> <p><b>N.B Referee compliance must be met before teams are accepted into the competition.</b></p> <p>The individual player registration process will be via MySideline once the nominations have been confirmed by the NSWTA Events Manager.</p> <p>The fees for the 2023 Country Championships are as follows:</p> <ul style="list-style-type: none"> <li>● Individual Players Registration: \$85 per person</li> <li>● Any late registration requests post the closing are at the discretion of NSWTA.</li> </ul> <p>All registrations post the closing date of <b>Wednesday 4<sup>th</sup> October</b> will be charged at \$105.00 incl. GST per player</p> <p><b>NB. As TFA have moved to an individual fee model from July 1, 2023, all participants will have to pay their national membership when they register into their first competition for the coming financial year. If that competition were Country Championships, the national online registration system, My Sideline, would require payment before allowing the registration into our competition to proceed. However, once paid, the participant would not have to pay this fee again, regardless of how many competitions or divisions they participated in during the next financial year.</b></p>

<b>2.3</b>	<b>Dates of Competition</b>
2.3.1	The 2023 Country Championships will be conducted on <b>Saturday 14<sup>th</sup> of October</b> and <b>Sunday 15<sup>th</sup> of October, 2023.</b>
<b>2.4</b>	<b>Divisional Categories</b>
2.4.1	<ul style="list-style-type: none"> <li>• Mixed, Women’s and Men’s Open (Born 2007 or before)</li> <li>• Men’s and Women’s 20 (Born 2003 – 2009)</li> <li>• Boys and Girls Youth League (Born 2006 – 2010)</li> <li>• Mixed, Women’s and Men’s Seniors (Born 1993 or before)</li> <li>• Mixed, Women’s and Men’s Masters (Born 1983 or before)</li> <li>• Men’s 50 (Born 1973 or before)</li> <li>• Women’s 50s (Born 1973 or before)</li> <li>• Men’s 55 (Born 1968 or before)</li> </ul> <p><b>There must be a minimum of five (5) teams to make a division.</b> If there are less than five (5) teams nominated, then those teams will join with the next closest category. For example: Men’s Senior - Men’s Open / Men’s Seniors - Masters.</p> <p>All Open category players <b>MUST</b> be born in 2007 or earlier to be participating (minimum age means can be 15 turning 16 in 2023).</p> <p>Under 20’s players <b>MUST</b> be born between 2003 and 2009 to be participating (minimum age means can be 13 turning 14 in 2023).</p> <p>Youth players <b>MUST</b> be born between 2006 and 2010 to be participating (minimum age means can be 12 turning 13).</p> <p><b>As per 2022 advice - there will be no special considerations requests accepted for players under the minimum age required for the division(s) they wish to participate in.</b></p>
<b>2.5</b>	<b>Venue &amp; Accommodation</b>
2.5.1	The 2023 Country Championships will be held at Glen Willow Regional Sports Complex, Pitts Lane, Mudgee.
<b>2.6</b>	<b>Eligibility Requirements</b>
2.6.1	<p>Players and Team Management Officials must be members, registered and played the required number of games within the NSWTA Affiliate they represent in the current (S1 2023), or previous competition (S2 2022).</p> <p>The minimum accreditation required for the Country Championships is as follows;</p> <ul style="list-style-type: none"> <li>• Head Coaches – TFA Talent Coaching (Level 2) Accreditation &amp; PBTR</li> <li>• Assistant Coach – TFA Foundation Coaching (Level 1) Accreditation &amp; PBTR</li> <li>• Manager- Play by the Rules (PBTR) - <a href="http://www.playbytherules.net.au/">http://www.playbytherules.net.au/</a></li> <li>• <b>Must have an ETRAINU Profile via the NEST and show accredited certificate if required</b></li> </ul>

	<p>It is a requirement that each Affiliate maintains adequate records of Team Management Accreditations including:</p> <ul style="list-style-type: none"> <li>● Coaching Accreditation</li> <li>● Play by the Rules Certifications</li> <li>● Working with Children Check Status</li> </ul> <p>Affiliate Personnel are required to complete the following components of the learning portal at: <a href="http://www.playbytherules.net.au">http://www.playbytherules.net.au</a></p> <ul style="list-style-type: none"> <li>● Child Protection: All Team’s Management &amp; Affiliate Coordinator</li> <li>● Harassment and Discrimination: All Team’s Management &amp; Affiliate Coordinator</li> <li>● Complaint’s handling: Affiliate Coordinator</li> </ul> <p>All team management who have participants under the age of 18 <b>MUST</b> have a verified Working with Children Check and be cleared to be engaged with participants under the age of 18.</p> <p>If your Affiliate has unqualified Coaches, please do not hesitate to contact: <a href="mailto:technical@nswtouch.com.au">technical@nswtouch.com.au</a></p> <p>Affiliate Coordinators are reminded to advise all Team Management/Players/Officials that all NSWTA tournaments are governed by the Unaffiliated Rule below:</p> <p>"IF A PLAYER, REFEREE, OFFICIAL ETC. PARTICIPATES IN AN UNAFFILIATED COMPETITION, REGARDLESS OF WHETHER THEY ALSO PLAY IN AN AFFILIATE COMPETITION, THEY WILL BE INELIGIBLE TO PARTICIPATE IN A NSWTA OR TFA TOURNAMENT FOR A PERIOD OF 12 MONTHS".</p>
<p><b>2.7</b></p>	<p><b>Referee Nomination</b></p>
<p>2.7.1</p>	<p>The referee nomination must be completed as part of the team nomination</p> <p>Affiliate Responsibilities of Referees Nomination:</p> <ul style="list-style-type: none"> <li>● Affiliates are required to nominate as a minimum one (1) referee per team nominated PLUS one (1) Extra Referee (i.e. 3 teams = 4 Referees)</li> <li>● Nominated referees must be registered online and officiating at the Affiliate they wish to represent in the current or previous season. N.B. Please refer to clause 3.6.4 of the General Conditions of Entry</li> <li>● Nominated referees must be of the standard of the Country Championships</li> <li>● Nominated referees must have at least 12 months of practical refereeing experience before attending the 2023 Country Championships</li> <li>● Nominated referees <b>must be linked to a team</b>. Should the referee <b>not attend their appointed game, have not been replaced by the affiliate</b>, and without an acceptable cause, that team will <ul style="list-style-type: none"> <li>○ <b>On the first occasion be deducted 2 points.</b></li> <li>○ <b>On the second occasion be deducted 4 points and the Affiliate fined \$500*</b></li> <li>○ <b>On the third occasion the team will be removed from the competition and the Affiliate fined \$1000.*</b></li> </ul> </li> <li>● Provide 24 hours notice of any referee to be replaced.</li> <li>● <b>Ensure nominated referees are available to meet the minimum requirement below.</b></li> </ul> <p><b>NB. Fines must be paid prior to any team from that affiliate participating in the next round/competition.</b></p>

	<p>Referee Responsibilities of Nomination:</p> <ul style="list-style-type: none"> <li>● Must be 16 years or older</li> <li>● Must have a minimum of <u>Level 2</u> Referees accreditation</li> <li>● Complete the individual referee’s registration by Wednesday 4<sup>th</sup> October.</li> </ul> <p>If the referee’s nomination is not fully completed, team nominations <b>will not be accepted</b>. During the verification process, if <b>a referee is unaware that they have been nominated by the Affiliate, the Affiliate’s team nominations will not be accepted</b>.</p> <p>NSWTA will also be continuing the strike system that commenced at the 2023 JSC. The information regarding this can be found under <b>section 2.4.12</b> in the General Conditions of Entry.</p> <p>NSWTA are enforcing referee qualification and that referees must be participating in the competition/Affiliate they wish to represent.</p> <ol style="list-style-type: none"> <li>1) All Referees will need to identify which is the main/home Affiliate when they register online via My Sideline and officiate regularly in-line with the seasonal eligibility requirements of the NSWTA Events Conditions of Entry. Validation of this information will be made by the individual Referee themselves via registration, the Affiliate Coordinator and Referees Director, the NSW State Referees Panel and the NSWTA.</li> <li>2) Once identified and confirmed by all, this will be the only Affiliate that the individual referee will be nominated by to participate in any NSWTA managed or endorsed event. Should a Referee wish to change their main/home Affiliate this will need to be validated by all parties listed as per Point 1.</li> <li>3) If an Interstate/International referee wishes to participate, firstly they need endorsement from their relevant National or State Referees Panel/Director. They would also be loaned as per the advice in Point 3A. Any Interstate Referee request <b>must be approved</b> by the General Manager.</li> </ol>
<p>2.7.2</p>	<p>The fees for additional referees:</p> <ul style="list-style-type: none"> <li>● \$80.00 levy for additional referees without accommodation</li> </ul> <p>In the case of referees not requiring accommodation a rebate of \$80.00 will be applicable after the 2023 Country Championships. This is taking into account that the affiliate has met all referee requirements at the event.</p>
<p>2.7.3</p>	<p>As previously advised, NSWTA will be utilising the <b>Referee Pool</b> for those affiliates who do not meet referee compliance.</p> <p>NSWTA will allow affiliates with a shortfall in required referees to be provided to them from beyond their region for the 2023 Country Championships ONLY- under the following conditions:</p> <ol style="list-style-type: none"> <li>1. All Affiliates will be sent a form to nominate referees that are currently officiating but do not have a link with a club for either event.</li> <li>2. NSWTA will allow affiliates to “borrow” referees outside their region for the 2023 Country Championships ONLY. Please refer to point 7.</li> </ol>

	<p>3. Affiliates with a shortfall of referees will be charged (\$500.00) per referee. This will be paid to the affiliate whose nominated referee/s are allocated to the non-compliant affiliate.</p> <p>4. This money will compensate those referees who attend and allows affiliates to be compliant. From this fee, affiliates will provide each referee with \$400 and retain \$100 for the affiliate.</p> <p>5. Referees will be allocated to clubs by the NSWTA Events Team. They will not be identified to the non-compliant affiliates to reduce the risk of 'poaching' for future events.</p> <p>6. After the nomination period, if affiliates still have a shortfall, teams will, unfortunately, be withdrawn from the competition.</p> <p>7. Per the Strike Policy, affiliates that utilise referees outside their regional boundary will receive a point towards their 5-point limit, as outlined below.</p> <p><b>Affiliates will have a maximum limit of 5 points over three years. Affiliates will receive 1 point per Referee short for NSWTA events. Should all 5 points be exhausted, the affiliate will be placed under a limit on the number of teams they can enter into the next NSWTA event.</b></p> <p>Furthermore, affiliates that do not meet compliance must submit a referee development program as per 2.2.5 of the NSWTA General Conditions of Entry 2023/24.</p>
<b>2.8</b>	<b>Online Registration and Team Numbers</b>
2.8.1	<p>The Individual Player Registration Fee for the 2023 Country Championships will be \$85.00 (incl. GST) per player due Wednesday 4<sup>th</sup> of October, 2023.</p> <p><b>N.B.</b> It is a requirement that all teams register no more than 14 participants per team to compete in the tournament. Late registrations will only be accepted via application in writing where extenuating circumstances have occurred. The lodgement of such an application is not an automatic acceptance of a late registration.</p> <p><b>N.B</b> A player may only register in one (1) team.</p> <p><i>If the registration number falls below 14, the affiliate will be invoiced for the missing players from each team after the Country Championships player and referee audit is completed. i.e.: 11 players only in Men's 45's, the Club will be invoiced for three (3) players at the Individual Player Registration entry fee of \$85 X 3 = \$245.</i></p>
<b>2.9</b>	<b>Refunds</b>
2.9.1	Refunds must be submitted via the refund request form to the Events Team by Monday October 23, 2023. No applications will be accepted after Monday October 23, 2023.
<b>2.10</b>	<b>Communication</b>
2.10.1	<p><u>Enquiries for all teams must be made by the Affiliate Coordinator.</u></p> <p>Each Affiliate must appoint an Affiliate Coordinator. All correspondence and dealings must be made through the Affiliate Coordinator. All communication with Affiliates and Teams will be done with the email address provided.</p>



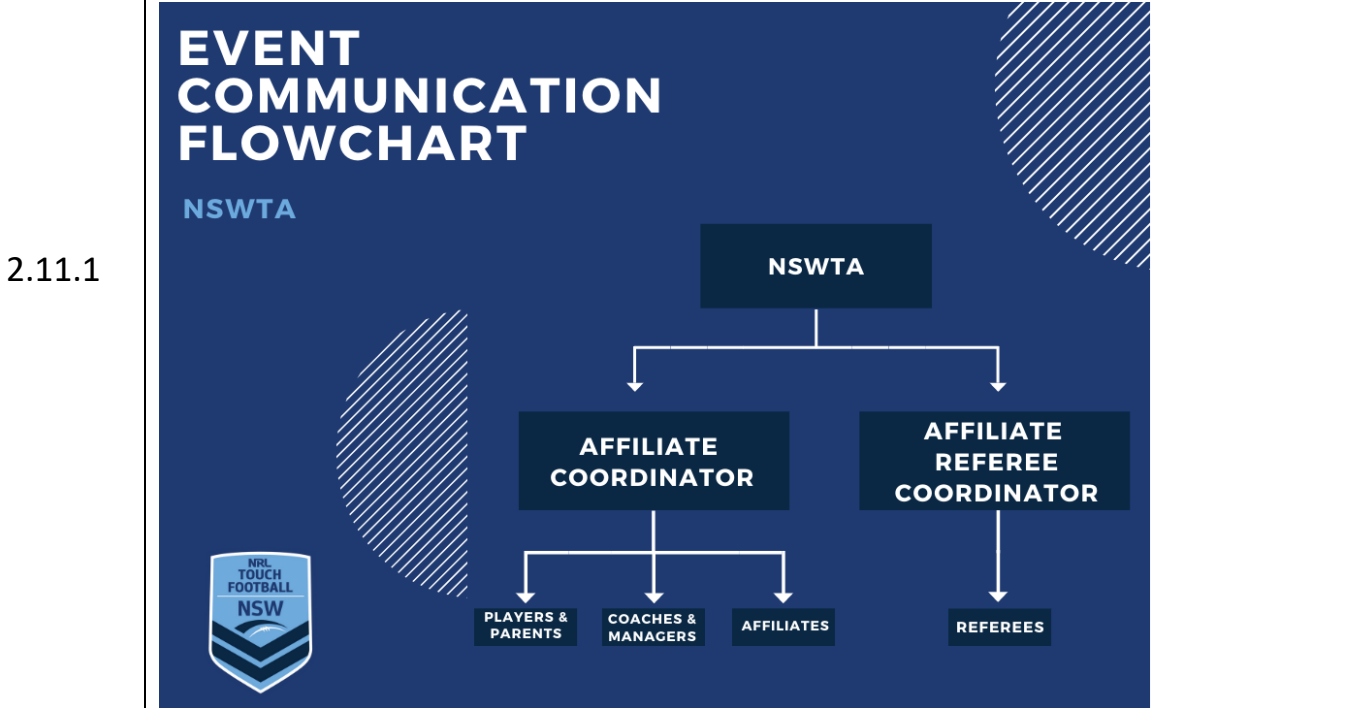
To further enhance the communication links, it is recommended that all Affiliate Coordinators, Team Management, Players, and Referees utilize the NSW Touch smart phone free app. This is available via the Google Play Store and Apple App Store.

It is the responsibility of the Affiliate Coordinator to ensure Coaches and Managers are informed of any changes when notified by NSWTA and that they are conversant with these Conditions of Entry and the General Conditions of Entry for all NSWTA Events.

**2.11 Communication for the Event**

Enquiries for all teams must be made by the Affiliate Coordinator to NSWTA.

All correspondence from NSWTA will be sent to the Affiliate Coordinator and Team Management contacts via emails supplied by the Affiliate Coordinator.



**2.12 Registration and Team Sheets**

2.12.1

Player Rosters are required to be submitted by Monday 25<sup>th</sup> September, 2023.

Sheets will then be resent to Affiliates to double check and confirm.

Managers will be required to sign the FINAL Rosters at ball pick up by initialling at the bottom of the sheet.

This is to confirm that all names and player numbers are correct. Incorrect information or non-compliance will need to show cause as to why the individual team is not deducted 2 competition points.

## Section 3 - EVENT OPERATIONS

<b>3.1</b>	<b>Control of the Event</b>										
3.1.1	<p>The Event Manager in conjunction with the Business Operations Manager and Event Coordinator will be in charge of all matters relating to the Tournament. Any matters not covered in the General Conditions or Tournament Conditions will be determined by the above Officials and their decision will be final.</p> <p>The General Manager will have final oversight on all matters.</p>										
<b>3.2</b>	<b>Wet Weather</b>										
3.2.1	<p>In the case of weather impacting this event, NSWTA will utilise the powers set out in Section 11.27 of the NSWTA General Conditions. If any change shall occur each team will be emailed and will receive a notification via the NSW Touch Smartphone App. Information will also be placed on the NSWTA Website, NSW Touch Football Network (Facebook), Twitter and Instagram.</p>										
<b>3.3</b>	<b>Match Balls</b>										
3.3.1	<p>All teams must use the official STEEDEN Match Ball in all games throughout the tournament. Each team shall receive a ball from the NSWTA at Ball Pickup on <b>Friday 13<sup>th</sup> October, 2023</b>.</p>										
<b>3.4</b>	<b>Match Results</b>										
3.4.1	<p>Match results will be updated on the NSW Touch Football Website at the completion of each competition round via the <a href="#">NSW Touch Website</a>. Results can also be viewed from the “NSW Touch” FREE smart phone application.</p>										
<b>3.5</b>	<b>Competition Points</b>										
3.5.1	<p>For the 2023 Country Championships the following will apply.</p> <table border="1"> <tr> <td>Win</td> <td>4 points</td> </tr> <tr> <td>Draw</td> <td>2 points</td> </tr> <tr> <td>Loss</td> <td>0 point</td> </tr> <tr> <td>Forfeit</td> <td>-2 points</td> </tr> <tr> <td>Bye</td> <td>0</td> </tr> </table> <p>Forfeited games.</p> <ul style="list-style-type: none"> <li>• 4 Points for the win (5-0 score)</li> <li>• -2 Points for the team forfeiting (0-5 score)</li> </ul> <p><b>NB.</b> The NSWTA reserves the right to alter bye points for a division should the draw warrant it.</p>	Win	4 points	Draw	2 points	Loss	0 point	Forfeit	-2 points	Bye	0
Win	4 points										
Draw	2 points										
Loss	0 point										
Forfeit	-2 points										
Bye	0										

<b>3.6</b>	<b>Affiliate Championship Points</b>	
3.6.1	Winners	20 Points
	Runners up	15 Points
	Semi Finalists	10 Points
	Quarter Finalists	7 Points
	Round of 16	5 Points
	Only one (1) Team will be eligible to earn points in the Club Championship whichever of the two entries finishes higher will be considered for Championship Points.	
<b>3.7</b>	<b>Game Duration</b>	
3.7.1	<p>Round matches will be 30-minute touchdown turnaround.</p> <p>All Finals Series matches will again consist of 30-minute touchdown turnaround.</p> <p>In the event of a draw in matches within the Final Series the drop off procedure will be used to decide the winner.</p>	
<b>3.8</b>	<b>Trophies</b>	
3.8.1	<p>Awards will be presented to:</p> <ul style="list-style-type: none"> <li>- Winners and Runner up (Medallions)</li> <li>- Player of the Finals (Medallions)</li> <li>- Club Champions</li> <li>- Finals Referees (Medallions)</li> </ul> <p><b>N.B.</b> Any affiliate who does not supply the correct referee quota of referees will be ineligible for the club championship.</p>	
<b>3.9</b>	<b>Presentation</b>	
3.9.1	<p>All Presentations will be held on <b>Sunday 15<sup>th</sup> October, 2023</b> at Glen Willow Regional Sporting Complex. The presentations will be held at the conclusion of the Grand Finals with Divisional times to be confirmed.</p> <p>Teams must assemble at the presentation area 10 minutes prior to the commencement of the presentation.</p>	
<b>3.10</b>	<b>Draw Format</b>	
3.10.1	The final format will not be decided until all team nominations are confirmed.	
<b>3.11</b>	<b>Medical</b>	
3.11.1	The NSWTA Sports Trainer is able to provide preventive strapping at the cost to the individual. They will also provide treatment of in game injuries.	

	<p>The Medical Team will comprise of:</p> <p>Physiotherapist – Sports Trainers.</p> <p>For insurance requirements, please report all injuries to the NSWTA Medical team and takeaway a copy of the incident report.</p>
<b>3.12</b>	<b>Tents</b>
3.12.1	<p>NO CAMPING overnight will be allowed at The Country Championships.</p> <p>Any pop-up tent/shade structure placed in an area that is deemed to be dangerous without the consent of the NSWTA Tournament staff will be asked to remove the tent. This will be done by those who are responsible for the structure.</p> <p>Before erecting any tents or shade structures, clubs MUST report to tournament control to seek permission and location. Affiliates and spectators are not permitted the use of Gas and Naked Flame (Hot Coals) BBQ's. Tents are to be kept in a tidy manner during the event and cleaned after each day.</p>
<b>3.13</b>	<b>Rules, Variations &amp; Adjustments</b>
3.13.1	<p>The NSWTA conduct events under the auspices of the Touch Football Australia 8<sup>th</sup> Edition rule book.</p> <p>Please refer to NSWTA Rules, Variations &amp; Adjustments outlined as follows:</p> <p>Mutual Respect Policy – All participating members of the 2023 Country Championships (including Players, Coaches, Referees, Selectors, Officials and spectators), have an obligation to be conversant with this protocol and both the NSWTA and TFA Member Protection Policy. This is explained in full detail under clause 12.4 in the General Conditions of Entry.</p> <p><b>N.B.</b> These can also be found under Section 12: Rules within the <a href="#">General Conditions of Entry</a>.</p>
<b>3.14</b>	<b>Send Offs and Sin Bins</b>
3.14.1	<p>Any player sent from the field for the remainder of the game will receive an automatic two (2) match suspension unless the Disciplinary Committee considers further action.</p> <p>Any participant who receives two “periods of time” throughout the tournament (not in the same game), will also receive an Automatic one (1) match suspension. Every subsequent period of time will receive an automatic one (1) match suspension</p> <p>These rules are explained in full detail under clauses 12.5 and 12.6 in the <a href="#">General Conditions of Entry</a>.</p>

## SUMMARY NOTE

This is only a summary of the tournament conditions. All coaches and managers should be fully conversant with the General Conditions for all NSWTA Events and the Country Championships Conditions of Entry.

Please inform your coaches of their requirements for the Country Championships.

We remind all Affiliates and Affiliate Coordinators that it is the responsibility of each Affiliate to ensure that all their players, officials, teams and spectators abide by all policies, by-laws and codes of conduct governing the sport for the duration of the event. This information can be found at:

[nswtouch.com.au](http://nswtouch.com.au)