



# CONDITIONS OF ENTRY: COUNTRY CHAMPIONSHIPS

---

TO BE READ IN CONJUNCTION WITH THE 2024-25 NSWTA  
GENERAL CONDITIONS OF ENTRY



## Contents

<b>Section 1- IMPORTANT DATES .....</b>	<b>2</b>
<b>SECTION 2 – COUNTRY CHAMPS ENTRY INFORMATION.....</b>	<b>3</b>
Nomination Closing Date .....	3
Dates of Competition .....	4
Venue.....	4
Eligibility Requirements .....	4
Referee Nomination.....	5
Online Registration and Team Numbers .....	7
Refunds.....	7
Communication .....	7
Communication for the Event.....	8
Registration and Team Sheets .....	8
<b>Section 3 - EVENT OPERATIONS .....</b>	<b>9</b>
Control of the Event .....	9
Wet Weather .....	9
Match Balls .....	9
Match Results.....	9
Competition Points.....	9
Affiliate Championship Points .....	10
Game Duration .....	10
Trophies .....	10
Presentation .....	10
Draw Format.....	10
Medical .....	10
Tents .....	11
Rules, Variations & Adjustments .....	11
<b>SUMMARY NOTE .....</b>	<b>12</b>

## Section 1- IMPORTANT DATES

1.1

### Friday, August 23

- Referee Nominations and Registrations Open

### Monday, September 2

- Referee Nominations Close
- Team and Team Management Nominations Open
- Player Pool Nominations Open

### Monday, September 9

- Team and Team Management Nominations Close
- New & Imported Players Forms Due
- Player Rosters Due
- List of Un-financial & Suspended Players Due (Forms available on the Events website)
- Team Uniform Design Due (Design sent in for approval)

### Friday, September 13

- Individual Online Player/Team Management Registrations Open

### Wednesday, September 18

- Working with Children Protection Form Due (Forms available on the Events website)
- Statuary Declaration Due (Forms available on the Events website)

### Friday, September 20

- Player Pool Nominations Close
- Country Championships Draft Draw Released

### Wednesday, September 25

- Individual Online Player/Team Management/Referee Registrations Close
- Tent Form Due

### Friday, October 4

- Late Registration Applications Open

### Wednesday, October 9

- Late Registration Applications Close

### Saturday, October 12

- Day 1 of Competition

### Sunday, October 13

- Day 2 of Competition – Final Series.

## SECTION 2 – COUNTRY CHAMPS ENTRY INFORMATION

<b>2.1</b>	<b>Nomination Closing Date</b>
2.1.1	<p>Affiliate Team and Team Management Nominations will be available via the <a href="#">Country Championships Webpage</a> and are due by <b>Monday, September 9</b>.</p> <p>Late nominations will only be accepted at the convenience of the competition.</p> <p>The Referee Nomination Form will be available via the <a href="#">Country Championships Webpage</a> and <b>must be completed in FULL by Monday, September 2</b>.</p> <p>All successfully nominated Affiliates will be required to provide their Team Rosters, Statutory Declarations, List of Un-financial/Suspended Players, and Working with Children Protection Forms in line with the dates set out in the Important Dates section of this document.</p> <p>All Team Management personnel and Affiliate Coordinators will need to complete their online registration via MySideline. Affiliate Coordinators will need to register as a Coach into one of their respective teams.</p> <p>Incomplete Nominations will be advised to Affiliates and only accepted when properly and fully completed.</p>
<b>2.2</b>	<b>Nominations and Entry Fees</b>
2.2.1	<p>There are a number of important details that are necessary for this process to be completed:</p> <ul style="list-style-type: none"><li>• Teams the Affiliate are entering into the competition</li><li>• Coaches, Assistant Coach &amp; Managers details (Name, Mobile &amp; Email)</li><li>• Qualified Referees for each team and details (Name, Mobile &amp; Email), plus an additional one from your Affiliate (For Example: 2 teams = 3 Referees)</li></ul> <p><b>N.B Referee compliance must be met before teams are accepted into the competition.</b></p> <p>The individual player registration process will be via MySideline once nominations have been confirmed by the NSWTA Events Manager.</p> <p>The fees for the 2024 Country Championships are as follows:</p> <ul style="list-style-type: none"><li>• Individual Player Registration: \$87.00 per person</li><li>• Any late registration requests post the closing are at the discretion of NSWTA.</li></ul> <p>All registrations post the closing date of <b>Wednesday, September 25</b> will be charged \$105.00 incl. GST per player.</p> <p><b>NB. As TFA have moved to an individual fee model from July 1, 2023, all participants will have to pay their national membership fee when they register into their first competition for the coming financial year. If that competition is Country Championships, the national online registration system, My Sideline, will require payment before allowing the registration into our competition to</b></p>

	<b>proceed. However, once paid, the participant will not have to pay this fee again, regardless of how many competitions or divisions they participate in during the next financial year.</b>
<b>2.3</b>	<b>Dates of Competition</b>
2.3.1	The 2024 Country Championships will be conducted on <b>Saturday, October 12</b> and <b>Sunday, October 13</b> at Thomas Dalton Park, Fairy Meadow.
<b>2.4</b>	<b>Divisional Categories</b>
2.4.1	<ul style="list-style-type: none"> <li>• Mixed, Women’s and Men’s Open (Born 2008 or before)</li> <li>• Men’s and Women’s 20 (Born 2004 – 2010)</li> <li>• Boys and Girls Youth League (Born 2007 – 2011)</li> <li>• Mixed, Women’s and Men’s Seniors (Born 1994 or before)</li> <li>• Mixed, Women’s and Men’s Masters (Born 1984 or before)</li> <li>• Men’s 50 (Born 1974 or before)</li> <li>• Women’s 50s (Born 1974 or before)</li> <li>• Men’s 55 (Born 1969 or before)</li> <li>• All Abilities</li> </ul> <p><b>There must be at least five (5) teams to make a category in Opens and Youth Divisions.</b> If there are less than five (5) teams nominated, then those teams will join the next closest category.</p> <p><b>There must be at least four (4) teams to make a category in Senior Divisions.</b> If there are less than four (4) teams nominated, then those teams will join the next closest category.</p> <p>All Open category players <b>MUST</b> be born in 2008 or earlier to be participating (minimum age means can be 15 turning 16 in 2024).</p> <p>Under 20’s players <b>MUST</b> be born between 2004 and 2010 to be participating (minimum age means can be 13 turning 14 in 2024).</p> <p>Youth players <b>MUST</b> be born between 2007 and 2011 to be participating (minimum age means can be 12 turning 13).</p> <p><b>As per 2023 advice - there will be no special considerations requests accepted for players under the minimum age required for the division(s) they wish to participate in.</b></p>
<b>2.5</b>	<b>Venue</b>
2.5.1	The 2024 Country Championships will be held at Thomas Dalton Park, Fairy Meadow.
<b>2.6</b>	<b>Eligibility Requirements</b>
2.6.1	<p>Players and Team Management Officials must be members, registered and played the required number of games within the NSWTA Affiliate they represent in the current (S1 2024), or previous competition (S2 2023).</p> <p>The minimum accreditation required for the Country Championships is as follows:</p> <ul style="list-style-type: none"> <li>• Head Coaches – TFA Talent Coaching (Level 2) Accreditation &amp; PBTR</li> </ul>

	<ul style="list-style-type: none"> <li>• Assistant Coach – TFA Foundation Coaching (Level 1) Accreditation &amp; PBTR</li> <li>• Manager- Play by the Rules (PBTR) - <a href="http://www.playbytherules.net.au/">http://www.playbytherules.net.au/</a></li> <li>• <b>Must have an ETRAINU Profile via the NEST and show accredited certificate if required</b></li> <li>• <b>All Open’s, Mixed Open’s, U/20s and Youth League Coaches are required to undertake the Safeguarding Children and Young People in Sport Induction – prior to the Country Championships. This is available to coaches as an online course via <a href="#">The NEST</a>.</b></li> </ul> <p>It is a requirement that each Affiliate maintains adequate records of Team Management Qualifications including:</p> <ul style="list-style-type: none"> <li>• Coaching Accreditations</li> <li>• Play by the Rules Certifications</li> <li>• Working with Children Check Status’</li> <li>• Sport Integrity Australia Certifications</li> </ul> <p>Affiliate Personnel are required to complete the following components of the learning portal at: <a href="http://www.playbytherules.net.au">http://www.playbytherules.net.au</a></p> <ul style="list-style-type: none"> <li>• Child Protection: All Team Management &amp; Affiliate Coordinators</li> <li>• Harassment and Discrimination: All Team Management &amp; Affiliate Coordinators</li> <li>• Complaints Handling: Affiliate Coordinators</li> </ul> <p>All team management personnel engaged with participants under the age of 18 <b>MUST</b> have a verified Working with Children Check and must be cleared to engage with minors.</p> <p>If your Affiliate has unqualified Coaches, please do not hesitate to contact: <a href="mailto:will.hickey@nswtouch.com.au">will.hickey@nswtouch.com.au</a></p> <p>Affiliate Coordinators are reminded to advise all Team Management/Players/Officials that all NSWTA tournaments are governed by the Unaffiliated Rule below:</p> <p>"IF A PLAYER, REFEREE, OFFICIAL ETC. PARTICIPATES IN AN UNAFFILIATED COMPETITION, REGARDLESS OF WHETHER THEY ALSO PLAY IN AN AFFILIATE COMPETITION, THEY WILL BE INELIGIBLE TO PARTICIPATE IN A NSWTA OR TFA TOURNAMENT FOR A PERIOD OF 12 MONTHS".</p>
<p><b>2.7</b></p>	<p><b>Referee Nomination</b></p>
<p>2.7.1</p>	<p>The Referee Nomination must be completed prior to Team Nominations.</p> <p>Affiliate Responsibilities of Referees Nomination:</p> <ul style="list-style-type: none"> <li>• Affiliates are required to nominate as a minimum one (1) referee per team nominated PLUS one (1) Extra Referee (i.e. 3 teams = 4 Referees)</li> <li>• Nominated referees must be registered online and officiating at the Affiliate they wish to represent in the current or previous season. N.B. Please refer to clause 3.6.4 of the General Conditions of Entry</li> <li>• Nominated referees must be of the standard of the Country Championships</li> <li>• Nominated referees must have at least 12 months of practical refereeing experience before attending the 2024 Country Championships</li> </ul>

	<ul style="list-style-type: none"> <li>● Nominated referees <b>must be linked to a team</b>. Should the referee <b>not attend their appointed game, have not been replaced by the affiliate</b>, and without an acceptable cause, that team will <ul style="list-style-type: none"> <li>○ <b>On the first occasion be deducted 2 points.</b></li> <li>○ <b>On the second occasion be deducted 4 points and the Affiliate fined \$500*</b></li> <li>○ <b>On the third occasion the team will be removed from the competition and the Affiliate fined \$1000. *</b></li> </ul> </li> <li>● Provide 24 hours' notice of any referee to be replaced.</li> <li>● <b>Ensure nominated referees are available to meet the minimum requirement below.</b> <b>NB. Fines must be paid prior to any team from that affiliate participating in the next round/competition.</b></li> </ul> <p>Referee Responsibilities of Nomination:</p> <ul style="list-style-type: none"> <li>● Must be 16 years or older</li> <li>● Must have a minimum of <u>Level 2</u> Referees accreditation</li> <li>● Complete the individual referee's registration by <b>Wednesday, September 25.</b></li> </ul> <p>If the referee's nomination is not fully completed, team nominations <b>will not be accepted</b>. During the verification process, if a <b>referee is unaware that they have been nominated by the Affiliate, the Affiliate's team nomination will not be accepted.</b></p> <p>NSWTA are enforcing referee qualifications and that referees must be participating in the competition/Affiliate they wish to represent.</p> <ol style="list-style-type: none"> <li>1) All Referees will need to identify their main/Home Affiliate to the NSWTA. For eligibility purposes, referees must officiate regularly in-line with the seasonal eligibility requirements of the NSWTA Events Conditions of Entry. Validation of this information will be made by the individual Referee themselves, the Affiliate Coordinator, Referees Director, the NSW State Referees Panel and the NSWTA.</li> <li>2) Once identified and confirmed by all, this will be the only Affiliate that the individual referee will be nominated by to participate in any NSWTA managed or endorsed event. Should a Referee wish to change their main/home Affiliate this will need to be validated by all parties listed as per Point 1.</li> <li>3) If an Interstate/International referee wishes to participate, firstly they need endorsement from their relevant National or State Referees Panel/Director. Once endorsement is received, all Interstate/International referees must go directly into the Referee Pool and will be allocated by the NSWTA.</li> </ol> <p>Endorsement of Interstate/International referees must be submitted via the following forms:</p> <ul style="list-style-type: none"> <li>● <a href="#">Inbound Interstate Request</a></li> <li>● <a href="#">Inbound International Request</a></li> </ul>
2.7.2	<p>The fees for additional referees:</p> <ul style="list-style-type: none"> <li>● \$80.00 levy for additional referees without accommodation</li> </ul> <p>In the case of referees not requiring accommodation a rebate of \$80.00 will be applicable after the 2024 Country Championships. This is taking into account that the affiliate has met all referee requirements at the event.</p>

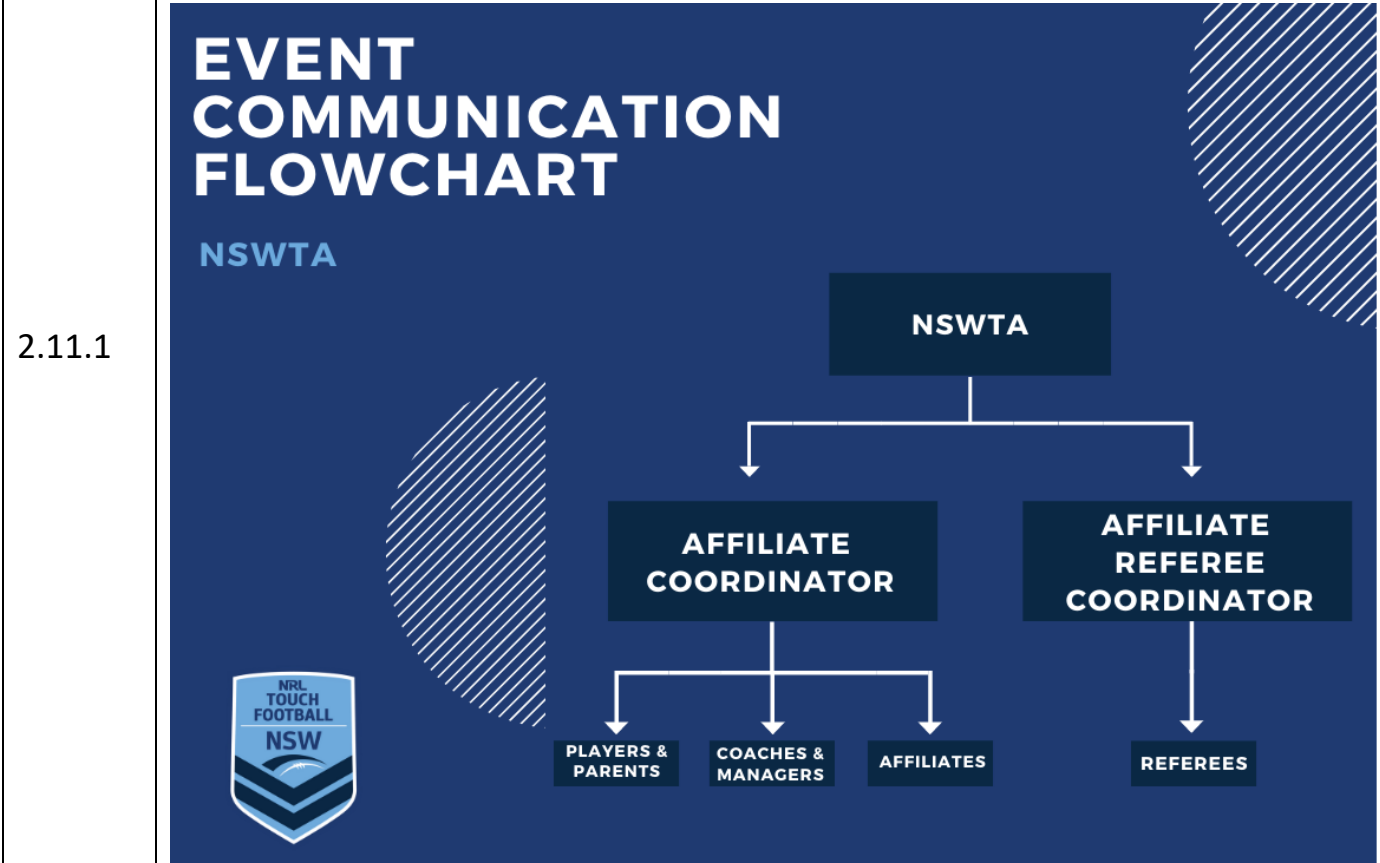
2.7.3	<p>As previously advised, NSWTA will be adopting the <b>Referee Pool</b> for those Affiliates who do not meet referee compliance.</p> <p>Affiliates will be able to borrow referees from within their cluster and region. This will still require the payment to the providing affiliate/referee that are providing for the shortfall; however, no strike will be incurred for the Affiliate acquiring the referee via this process.</p> <p>Under the updated policy, Affiliates will receive one (1) strike per event rather than one (1) strike for every referee short at an event. The cycle for returning to zero strikes is to be three (3) consecutive events at full compliance. Should all 5 points be exhausted, the affiliate will be placed under a limit on the number of teams they can enter into the next NSWTA event.</p> <p><b>N.B. due to alterations being made to the 5-strike policy, all Affiliates will begin the 2024/25 representative season at zero (0) strikes.</b></p> <p><a href="#">Click here for further information.</a></p>
2.8	<p><b>Online Registration and Team Numbers</b></p>
2.8.1	<p>The Individual Player Registration Fee for the 2024 Country Championships will be \$87.00 (incl. GST) per player due <b>Wednesday, September 25.</b></p> <p><b>N.B.</b> It is a requirement that all teams register no more than 14 participants per team to compete in the tournament. Late registrations will only be accepted via application in writing where extenuating circumstances have occurred. The lodgement of such an application is not an automatic acceptance of a late registration.</p> <p><b>N.B</b> A player may only register in one (1) team.</p> <p><i>If the registration number falls below 14, the affiliate will be invoiced for the missing players from each team after the Country Championships player and referee audit is completed. i.e.: 11 players only in Men's 45's, the Club will be invoiced for three (3) players at the Individual Player Registration entry fee of \$87 X 3 = \$261.</i></p>
2.9	<p><b>Refunds</b></p>
2.9.1	<p>Refunds must be submitted via the Refund Request Form to the Events Team by <b>Monday, October 21.</b> No applications will be accepted after <b>Monday, October 21.</b></p>
2.10	<p><b>Communication</b></p>
2.10.1	<p><u>Enquiries for all teams must be made by the Affiliate Coordinator.</u></p> <p>Each Affiliate must appoint an Affiliate Coordinator. All correspondence and dealings must be made through the Affiliate Coordinator. All communication with Affiliates and Teams will be done with the email address provided.</p> <p>To further enhance the communication links, it is recommended that all Affiliate Coordinators, Team Management, Players, and Referees utilise the NSW Touch smart phone free app. This is available via the Google Play Store and Apple App Store.</p>



It is the responsibility of the Affiliate Coordinator to ensure Coaches and Managers are informed of any changes when notified by NSWTA and that they are conversant with these Conditions of Entry and the General Conditions of Entry for all NSWTA Events.

**2.11 Communication for the Event**

Enquiries for all teams must be made by the Affiliate Coordinator to NSWTA.  
 All correspondence from NSWTA will be sent to the Affiliate Coordinator and Team Management contacts via emails supplied by the Affiliate Coordinator.



**2.12 Registration and Team Sheets**

2.12.1 Player Rosters are required to be submitted by **Monday, September 9**. Affiliate Coordinators will be given access to submit their Player Rosters via Google Sheets.  
 Player Rosters will then need to be verified at Ball Pick Up on **Friday, October 11**.  
 This is to confirm that all names and player numbers are correct. Incorrect information or non-compliance will need to show cause as to why the individual team is not deducted 2 competition points.

## Section 3 - EVENT OPERATIONS

<b>3.1</b>	<b>Control of the Event</b>										
3.1.1	<p>The Event Manager in conjunction with the Business Operations Manager and the State Competitions Coordinator will be in charge of all matters relating to the Tournament. Any matters not covered in the General Conditions or Tournament Conditions will be determined by the above Officials and their decision will be final.</p> <p>The General Manager will have final oversight on all matters.</p>										
<b>3.2</b>	<b>Wet Weather</b>										
3.2.1	In the case of weather impacting this event, NSWTA will utilise the powers set out in Section 11.27 of the NSWTA General Conditions. If any change shall occur each team will be emailed and will receive a notification via the NSW Touch Smartphone App. Information will also be placed on the NSWTA Website, NSW Touch Football Network (Facebook), Twitter and Instagram.										
<b>3.3</b>	<b>Match Balls</b>										
3.3.1	All teams must use the official STEEDEN Match Ball in all games throughout the tournament. Each team shall receive a ball from the NSWTA at Ball Pickup on <b>Friday, October 11</b> .										
<b>3.4</b>	<b>Match Results</b>										
3.4.1	Match results will be updated on MySideline at the completion of each competition round. Results will also be accessible via the <a href="#">NSW Touch Website</a> and the “NSW Touch” FREE smart phone application.										
<b>3.5</b>	<b>Competition Points</b>										
3.5.1	<p>For the 2024 Country Championships the following will apply:</p> <table border="1" style="margin-left: 20px;"> <tr> <td>Win</td> <td>4 points</td> </tr> <tr> <td>Draw</td> <td>2 points</td> </tr> <tr> <td>Loss</td> <td>0 point</td> </tr> <tr> <td>Forfeit</td> <td>-2 points</td> </tr> <tr> <td>Bye</td> <td>0 points</td> </tr> </table> <p>Forfeited games.</p> <ul style="list-style-type: none"> <li>• 4 Points for the win (5-0 score)</li> <li>• -2 Points for the team forfeiting (0-5 score)</li> </ul> <p><b>NB.</b> The NSWTA reserves the right to alter bye points for a division should the draw warrant it.</p>	Win	4 points	Draw	2 points	Loss	0 point	Forfeit	-2 points	Bye	0 points
Win	4 points										
Draw	2 points										
Loss	0 point										
Forfeit	-2 points										
Bye	0 points										

<b>3.6</b>	<b>Affiliate Championship Points</b>	
3.6.1	Winners	20 Points
	Runners up	15 Points
	Semi Finalists	10 Points
	Quarter Finalists	7 Points
	Round of 16	5 Points
	Only one (1) Team will be eligible to earn points in the Club Championship. Whichever of the two entries finishes higher will be considered for Championship Points.	
<b>3.7</b>	<b>Game Duration</b>	
3.7.1	<p>Round matches will be 30-minute touchdown turnaround format.</p> <p>All Finals Series matches will again consist of 30-minute touchdown turnaround.</p> <p>In the event of a draw in matches within the Final Series the drop off procedure will be used to decide the winner.</p>	
<b>3.8</b>	<b>Trophies</b>	
3.8.1	<p>Awards will be presented to:</p> <ul style="list-style-type: none"> <li>- Winners and Runner up (Medallions)</li> <li>- Player of the Finals (Medallions)</li> <li>- Club Champions</li> <li>- Finals Referees (Medallions)</li> </ul>	
<b>3.9</b>	<b>Presentation</b>	
3.9.1	<p>All Presentations will be held on <b>Sunday, October 13</b> at Thomas Dalton Park, Fairy Meadow. The presentations will be held at the conclusion of the Grand Finals with Divisional times to be confirmed.</p> <p>Teams must assemble at the presentation area 10 minutes prior to the commencement of their presentation.</p>	
<b>3.10</b>	<b>Draw Format</b>	
3.10.1	The final format will not be decided until all team nominations are confirmed.	
<b>3.11</b>	<b>Medical</b>	
3.11.1	<p>The NSWTA Sports Trainer is able to provide preventive strapping at the cost to the individual. They will also provide treatment of in game injuries.</p> <p>The Medical Team will comprise of:</p> <p>Physiotherapist – Sports Trainers.</p>	

	For insurance requirements, please report all injuries to the NSWTA Medical team and takeaway a copy of the incident report.
<b>3.12</b>	<b>Tents</b>
3.12.1	<p>NO CAMPING overnight will be allowed at The Country Championships.</p> <p>Any pop-up tent/shade structure placed in an area that is deemed to be dangerous without the consent of the NSWTA Tournament staff will be asked to remove the tent. This will be done by those who are responsible for the structure.</p> <p>Before erecting any tents or shade structures, clubs MUST report to tournament control to seek permission and location. Affiliates and spectators are not permitted the use of Gas and Naked Flame (Hot Coals) BBQ's. Tents are to be kept in a tidy manner during the event and cleaned after each day.</p>
<b>3.13</b>	<b>Rules, Variations &amp; Adjustments</b>
3.13.1	<p>The NSWTA conduct events under the auspices of the Touch Football Australia 8<sup>th</sup> Edition rule book. Please refer to NSWTA Rules, Variations &amp; Adjustments outlined as follows:</p> <p>Mutual Respect Policy – All participating members of the 2024 Country Championships (including Players, Coaches, Referees, Selectors, Officials and spectators), have an obligation to be conversant with this protocol and both the NSWTA and TFA Member Protection Policy. This is explained in full detail under clause 12.4 in the General Conditions of Entry.</p> <p><b>N.B.</b> These can also be found under Section 12: Rules within the <a href="#">General Conditions of Entry</a>.</p>
<b>3.14</b>	<b>Send Offs and Sin Bins</b>
3.14.1	<p>Any player sent from the field for the remainder of the game will receive an automatic two (2) match suspension unless the Disciplinary Committee considers further action.</p> <p>Any participant who receives two “periods of time” throughout the tournament (not in the same game), will also receive an Automatic one (1) match suspension. Every subsequent period of time will receive an automatic one (1) match suspension</p> <p>These rules are explained in full detail under clauses 12.5 and 12.6 in the <a href="#">General Conditions of Entry</a>.</p>

## SUMMARY NOTE

This is only a summary of the tournament conditions. All coaches and managers should be fully conversant with the General Conditions for all NSWTA Events and the Country Championships Conditions of Entry.

Please inform your coaches of their requirements for the Country Championships.

We remind all Affiliates and Affiliate Coordinators that it is the responsibility of each Affiliate to ensure that all players, officials, teams and spectators abide by all policies, by-laws and codes of conduct governing the sport for the duration of the event. This information can be found at:

<https://nswtouch.com.au/>